

Stripped Fitloc Mount Fix

Date	02 Dec 2021
-------------	-------------

Overview

Standard operating procedure for installing new Fitloc mounting hardware to overcome stripped-out threads in the Fitloc mount area on the frame of a Stages bike (see below).



Bike Model Applications

- All bikes equipped with Fitloc levers (all SC2 models excluding SC2.20 and all SC3 models)

Common Service Indicators

- Fitloc loose or wobbly regardless of tightened hardware (not the lever but the entire assembly)
- Fitloc mount screws will not thread properly into the frame

Tools Required

- Hexagonal-tip 2.5mm hex key (not ball-tip)

Parts Required

- 000-3985 - BHCS, M4x0.7 x 10mm L (quantity 4)
- Hex nut w/ external tooth lock washer - M4x0.7 (quantify 4)*

***These nuts are NOT carried as a SKU item by Stages Cycling and will need to be purchased at a hardware store or online. See example product [here](#).**

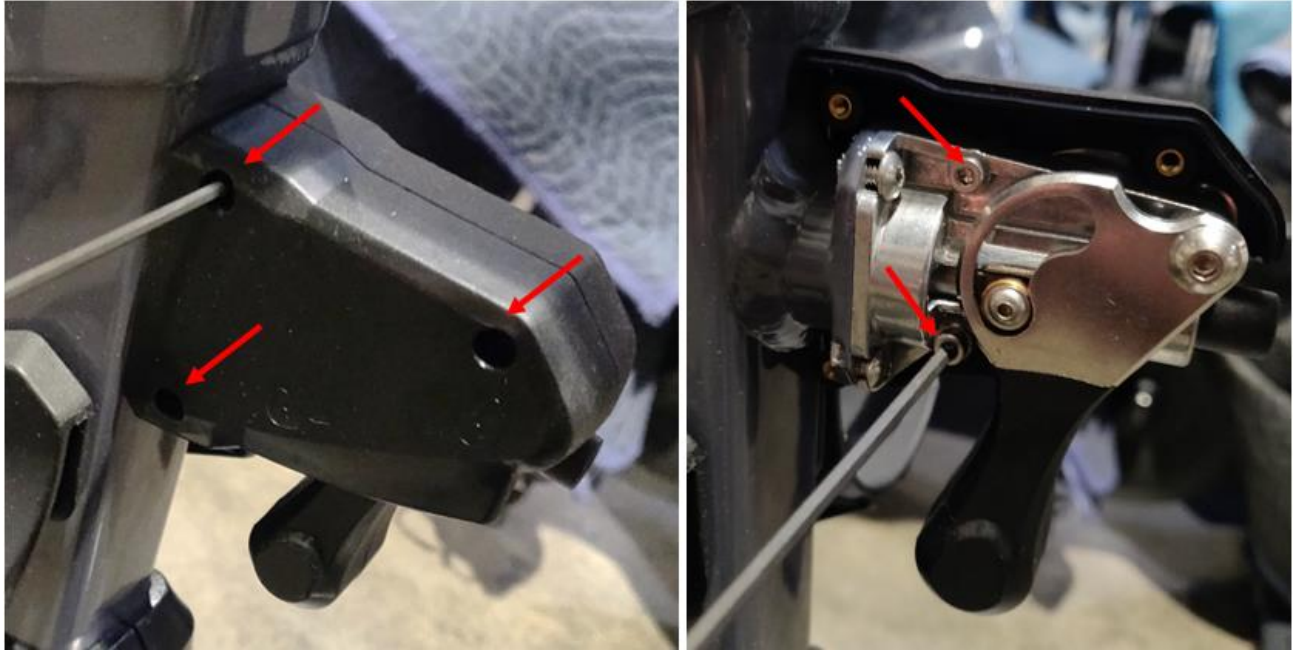
Estimated Time Required

15 mins

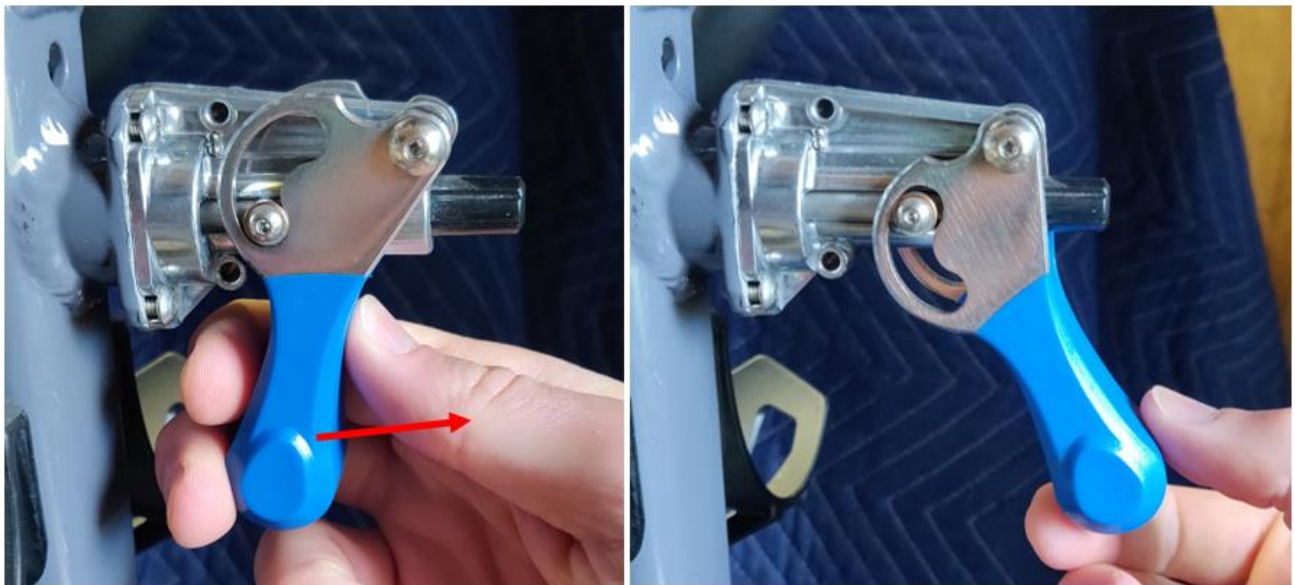
Procedure

The photos in this guide were taken at different times. Some photos will show a black Fitloc lever and some will show a blue lever.

1. Adjust the seat/handlebar associated with the Fitloc to be removed to its lowest setting.
2. Use a 2.5mm hex to remove the left side of the Fitloc cover (3 screws), then remove the right side cover by removing 2 more internal screws.



3. Pull the Fitloc lever outward to the fully unlocked position.



4. Use a **hexagonal-tip** 2.5mm hex to remove the Fitloc core from the bike frame (2 screws on each side). A long T-handle or the short side of a standard hex key is most effective for removing these screws.

Do not use a round-tipped hex tool or you may strip the screws.



5. Reinstall the Fitloc using the new screws and nuts. When inserting the new core into the frame you may need to pull the seat/handlebar stem slightly upward so that the pin of the Fitloc inserts fully into one of the holes in the stem and sits flush against the frame. See third photo below for side-profile view showing proper nut installation.



6. Reinstall the Fitloc shroud using a 2.5mm hex (see step 2 for reference photos).