

Fitloc Replacement

Date	10 May 2022
------	-------------

Overview

Standard operating procedure for replacing any/all components of a Fitloc (core/shroud/lever) on a Stages bike.

Bike Model Applications

- All bikes equipped with Fitloc levers (all SC2 models excluding SC2.20 and all SC3 models)

Common Service Indicators

- Damaged/broken Fitloc lever or shroud
- Fitloc has seized up and will not lock

Tools Required

- 2mm hex key
- 2.5mm hex key
- 3mm hex key

A variety of 2mm and 2.5mm hex keys recommended: longer/shorter, T-handle style, and both round-tipped and hexagonal-tipped hex keys will be useful.

Parts Required

- 000-5798 - Fitloc Core Assy (no lever or shroud)
 - 000-3953 - Kit, Fitloc shroud, w/HDWR*
 - 000-4219 - Kit, Fitloc lever, Blue, w/HDWR*
- *SKU will be changing once current stock runs out

Estimated Time Required

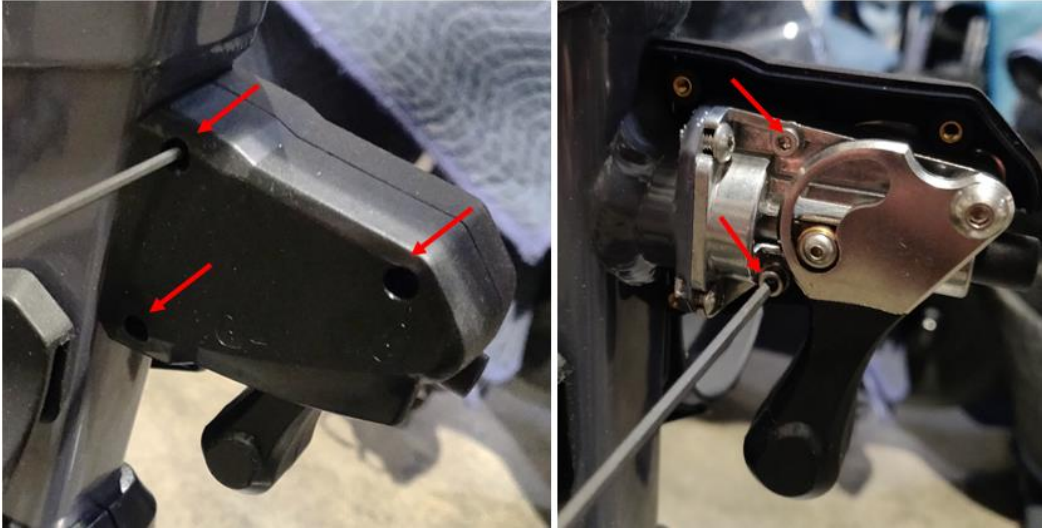
15 mins

Procedure

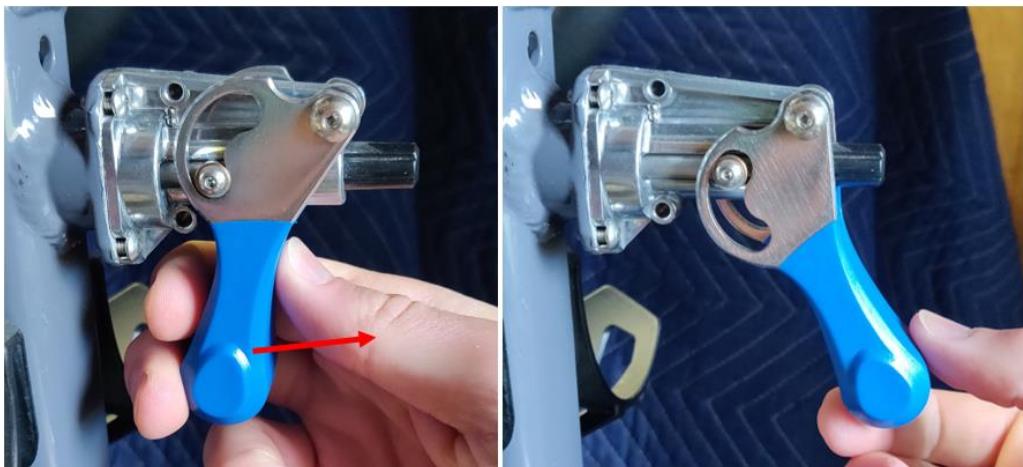
The photos in this guide were taken at different times. Some photos will show a black Fitloc lever and some will show a blue lever.

1. Adjust the seat/handlebar associated with the Fitloc to be removed to its lowest setting.

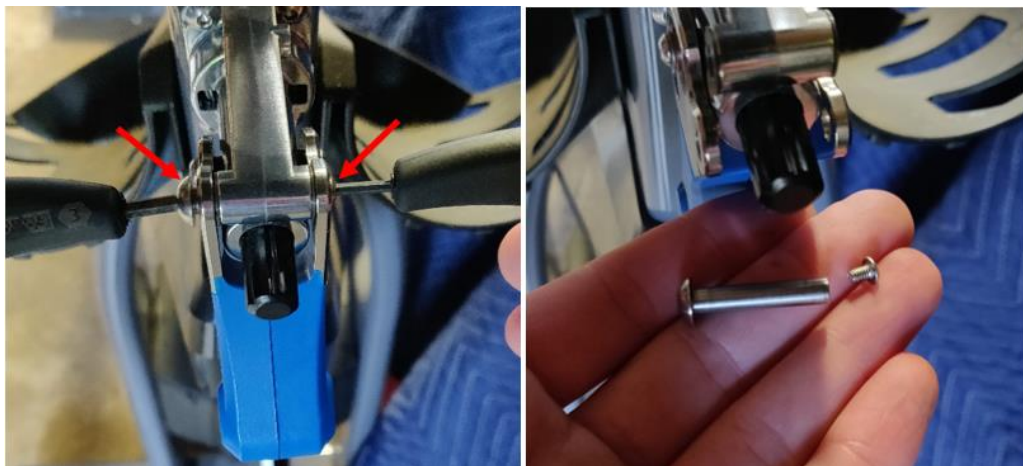
2. Use a 2.5mm hex to remove the left side of the Fitloc cover (3 screws), then remove the right side cover by removing 2 more internal screws.



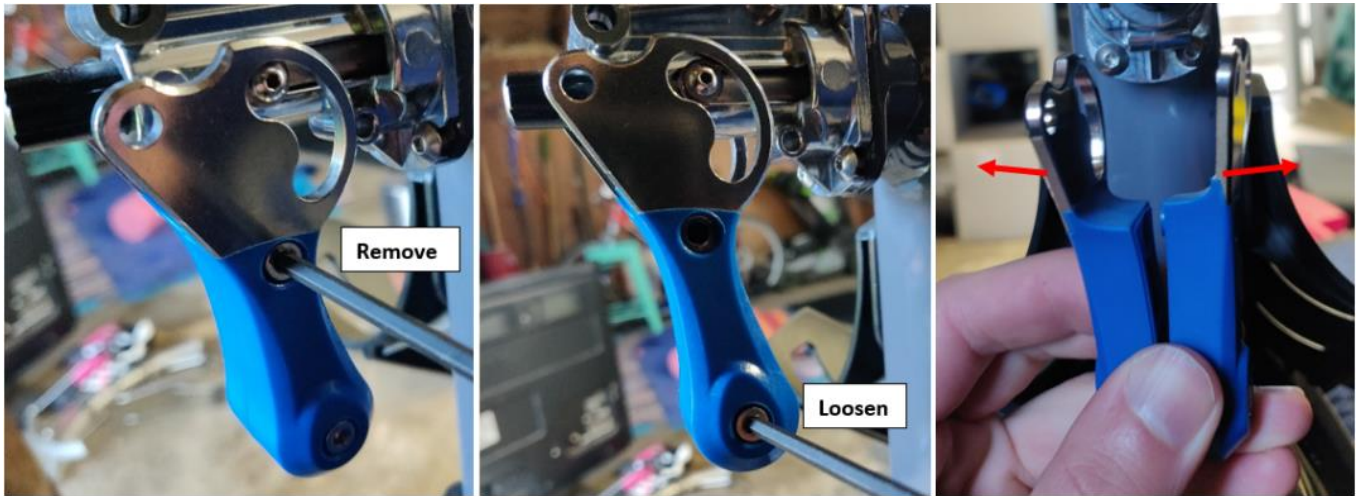
3. If only replacing the Fitloc core you will need to remove the lever from the original Fitloc so that it can be installed onto the new core. Pull the lever outward so that it is in the fully unlocked position.



4. Use a 3mm hex and 2mm hex to remove the screws at the top of the Fitloc lever.



5. Use a 3mm hex to remove the top screw from the right side of the plastic lever, then loosen (no need to fully remove) the bottom screw in the lever. Gently pry apart the two sides of the lever so that you can remove it from the Fitloc core.



6. Use a **hexagonal-tipped** 2.5mm hex to remove the Fitloc core from the bike frame (2 screws on each side). A long T-handle or the short side of a standard hex key is most effective for removing these screws.

Do not use a round-tipped hex tool or you may strip the screws.



Prior to replacing the Fitloc core, see [Jammed/Stuck Fitloc Fix](#) for steps to return a seized Fitloc core to functionality. The part may not actually need to be replaced.

7. Reverse the steps to install the new Fitloc core, lever, and shroud. When inserting the new core into the frame you may need to pull the seat/handlebar stem slightly upward so that the pin of the Fitloc inserts fully into one of the holes in the stem and sits flush against the frame.

If the frame is stripped out to the point that the Fitloc mounting hardware will not hold securely, see [Stripped Fitloc Mount Fix](#).

